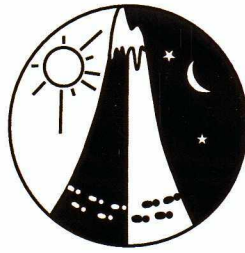


# The Irish Setters

Spring 12 hour Rogaine

19th October 2013

Emergency contact - Warren 0407 773 697  
Satellite Phone - +881622449700



### Setters & Veters

Peter Stevens  
Colin Kelly  
Alan Kelly  
Adam Kelly  
Andy Molnar  
John Najar

### Thanks

State Emergency Service  
Bayswater - Martin Hale

### Legend

SCALE 1:50,000, 5 metre contour interval

Buildings & Tanks	
Continuations	
Contours	
Control	
Dams	
Fence	
Forest-Farm Boundary	
Hash House	
Magnetic North	
Out-of-bounds	
Patrolled Road	
Road, Major Unsealed	
Road, Unsealed	
Road, Track	
Rock Surface/Rocky Clearings	
Watercourse	
Water Drop	



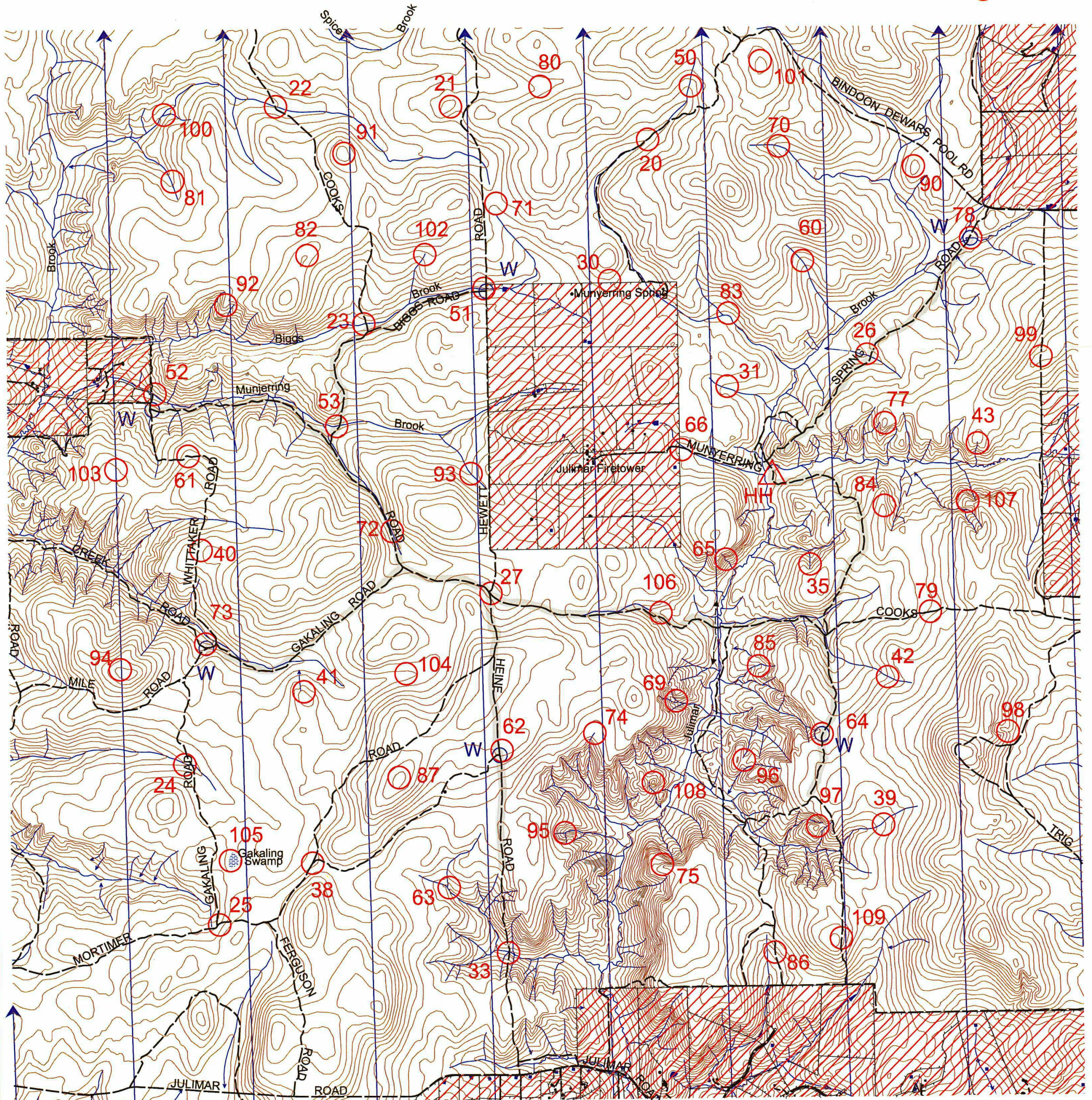
Department of Sport and Recreation



SCALE 1:50,000, 5 metre contour interval



Western Australian Rogaining Association, PO Box 1201, Subiaco, WA 6904



This map was produced using OCAD 9 by the Western Australian Rogaining Association, wa.rogaine.asn.au. Data supplied by Landgate and used under copy licence 393/93. Possession of this map does not give right of entry to this area.

# Irish Setters Rogaine

Western Australian Rogaining Association

19th October 2013

No	Description	Points
20	The track	20
21	A knoll	20
22	The road bend, watercourse junction	20
23	The watercourse	20
24	100m west of road in the watercourse	20
25	The road junction	20
26	The watercourse	20
27	The road junction	20
30	The fence	30
31	The watercourse	30
33	Watercourse track junction	30
35	Head of the gully	30
38	The track	30
39	The broad watercourse	30
40	The broad spur	40
41	The knoll northern end	40
42	The broad gully	40
43	The head of a gully	40
50	The watercourse (amongst anthills)	50
51	The watercourse <b>(Water)</b>	50
52	The watercourse <b>(Water)</b>	50
53	South side of the watercourse	50
60	The gully	60
61	A bend on the road	60
62	50m at 10 degrees from road junction <b>(Water)</b>	60
63	The water course junction	60
64	The watercourse track junction <b>(Water)</b>	60
65	The gully	60
66	The track near farm entrance	60
69	The watercourse junction	60
70	The gully	70
71	The broad saddle	70
72	The watercourse	70

No	Description	Points
73	50 m north of road junction <b>(Water)</b>	70
74	The head of the watercourse	70
75	The spur	70
77	The knoll	70
78	A watercourse track junction <b>(Water)</b>	70
79	The track	70
80	The broad gully	80
81	The watercourse	80
82	A knoll	80
83	A bend in the watercourse	80
84	The spur, upper part	80
85	The gully	80
86	The track	80
87	The knoll	80
90	The knoll	90
91	The knoll	90
92	The spur	90
93	The watercourse	90
94	The knoll - western end	90
95	The watercourse junction	90
96	The saddle	90
97	The knoll	90
98	The gully	90
99	The spur on the track	90
100	The watercourse junction	100
101	The knoll, dense scrub	100
102	The watercourse, head of	100
103	The broad knoll	100
104	The broad gully	100
105	Western side of the swamp	100
106	The gully	100
107	The spur	100
108	The knoll	100
109	The track	100

## IMPORTANT INFORMATION

Control Cards  
9:30 Saturday

Briefing  
9:45

Start  
10:00

Finish  
22:00 (10:00 pm)

Hash House  
16:00 (4:00pm)

Sunset  
18:29

Moonrise  
18:53

Moonset  
5:27

Late penalty  
10 points per minute or part minute  
Late  
No points if 30 minutes late

Controls used 67  
4350

**Water drops 51,52,62,64,73,78**

**If you are injured make your way to a water drop or patrolled Road and wait.**

**Patrolled roads**

**Munyererring Spring, Cooks, Biggs, Gakaling and Heine Roads**